

05/20/15

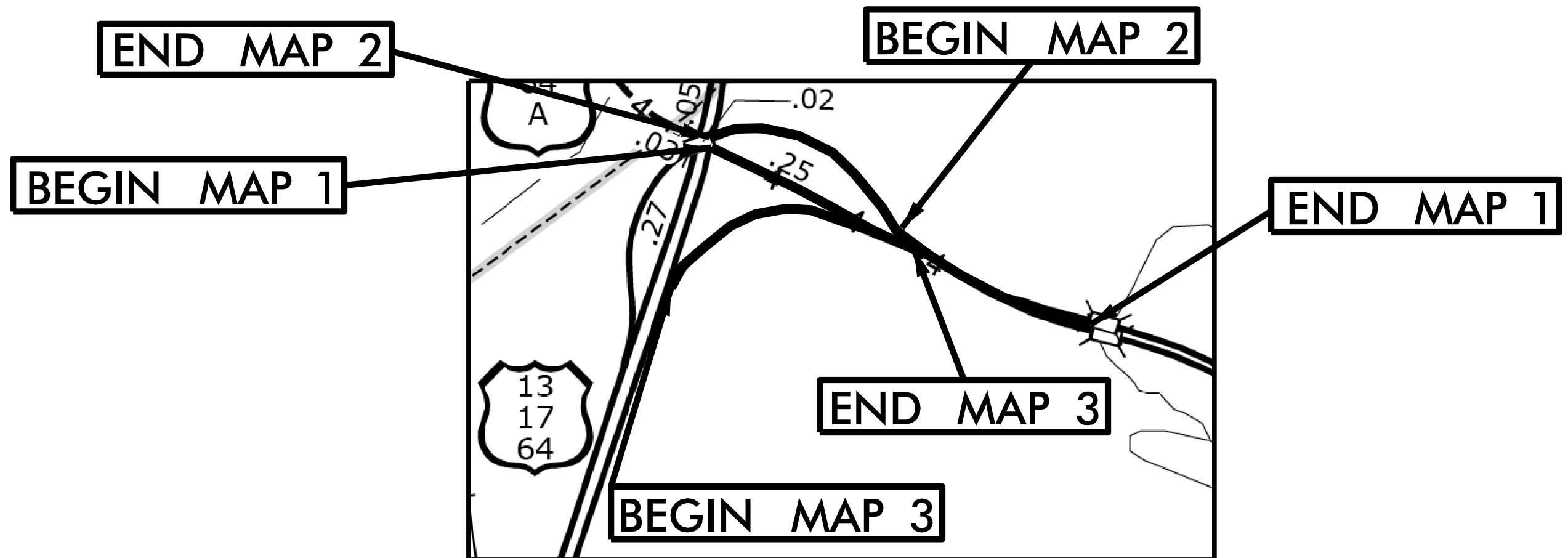
CONTRACT: DA00350 WBS ELEMENT: 2017CPT.01.23.10581.1

STATE OF NORTH CAROLINA
DIVISION OF HIGHWAYS

MARTIN COUNTY

| STATE | STATE PROJECT REFERENCE NO. | SHEET NO. | TOTAL SHEETS |
|-----------------------|-----------------------------|-------------|--------------|
| N.C. | 2017CPT.01.23.10581.1 | 1 | |
| STATE PROJ. NO. | P.A. PROJ. NO. | DESCRIPTION | |
| 2017CPT.01.23.10581.1 | | MAP 1 - 3 | |
| | | | |
| | | | |

LOCATION: MAP 1 - US 64 EBWB - FROM US 13 TO BRIDGE (OVER SWEETWATER CREEK)
 MAP 2 - US 64 WB RAMP - FROM US 64 TO BRIDGE (OVER US 13, US 17 & US 64)
 MAP 3 - US 64 EB RAMP - FROM US 13, US 17 & US 64 TO END RAMP (US 64)
 TYPE OF WORK: MILLING, RESURFACING, & LONG LIFE PAVEMENT MARKINGS



NOT TO SCALE

PROJECT LENGTH

LENGTH OF MAP 1 = 0.47 MI.
 LENGTH OF MAP 2 = 0.27 MI.
 LENGTH OF MAP 3 = 0.32 MI.

Prepared in the Office of:
DIVISION OF HIGHWAYS
 113 Airport Dr., Edenton NC, 27932

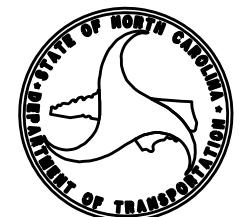
2012 STANDARD SPECIFICATIONS

LETTING DATE:

W.B. HOBBS, P.E.
 DIVISION PROJECT MANAGER

C.E. SLACHTA
 DIVISION PROPOSALS ENGINEER

DIVISION OF HIGHWAYS
 STATE OF NORTH CAROLINA



05/20/2015

STATE OF NORTH CAROLINA
DIVISION OF HIGHWAYS

MARTIN COUNTY

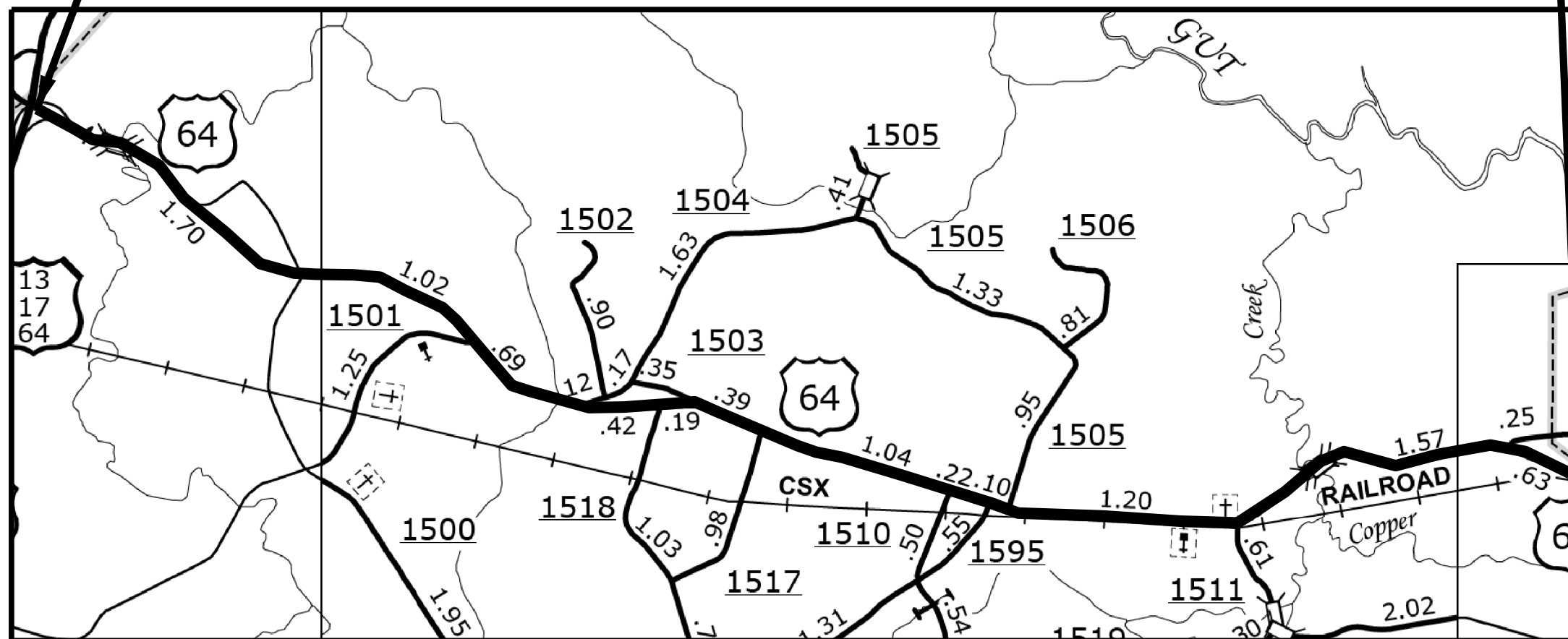
| | | | |
|-----------------------|-----------------------------|-------------|--------------|
| STATE | STATE PROJECT REFERENCE NO. | SHEET NO. | TOTAL SHEETS |
| N.C. | 2017CPT.01.23.10581.1 | 2 | |
| STATE PROJ. NO. | F.A. PROJ. NO. | DESCRIPTION | |
| 2017CPT.01.23.10581.1 | | MAP 4 | |
| | | | |
| | | | |

LOCATION: MAP 4 - US 64 EB - FROM BRIDGE (OVER SWEETWATER CREEK) TO BEGIN CURB & GUTTER IN JAMESVILLE

TYPE OF WORK: MILLING, RESURFACING, & LONG LIFE PAVEMENT MARKINGS

BEGIN MAP 4

END MAP 4



NOT TO SCALE

CONTRACT: DA00350 WBS ELEMENT: 2017CPT.01.23.10581.1

PROJECT LENGTH

LENGTH OF MAP 4 = 8.3 MI.

Prepared in the Office of
DIVISION OF HIGHWAYS
113 Airport Dr., Edenton NC, 27932

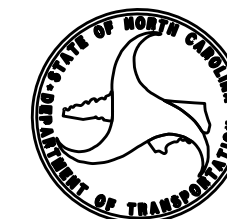
2012 STANDARD SPECIFICATIONS

LETTING DATE:

W.B. HOBBS, P.E.
DIVISION PROJECT MANAGER

C.E. SLACHTA
DIVISION PROPOSALS ENGINEER

DIVISION OF HIGHWAYS
STATE OF NORTH CAROLINA



09/20/16

STATE OF NORTH CAROLINA
DIVISION OF HIGHWAYS

MARTIN COUNTY

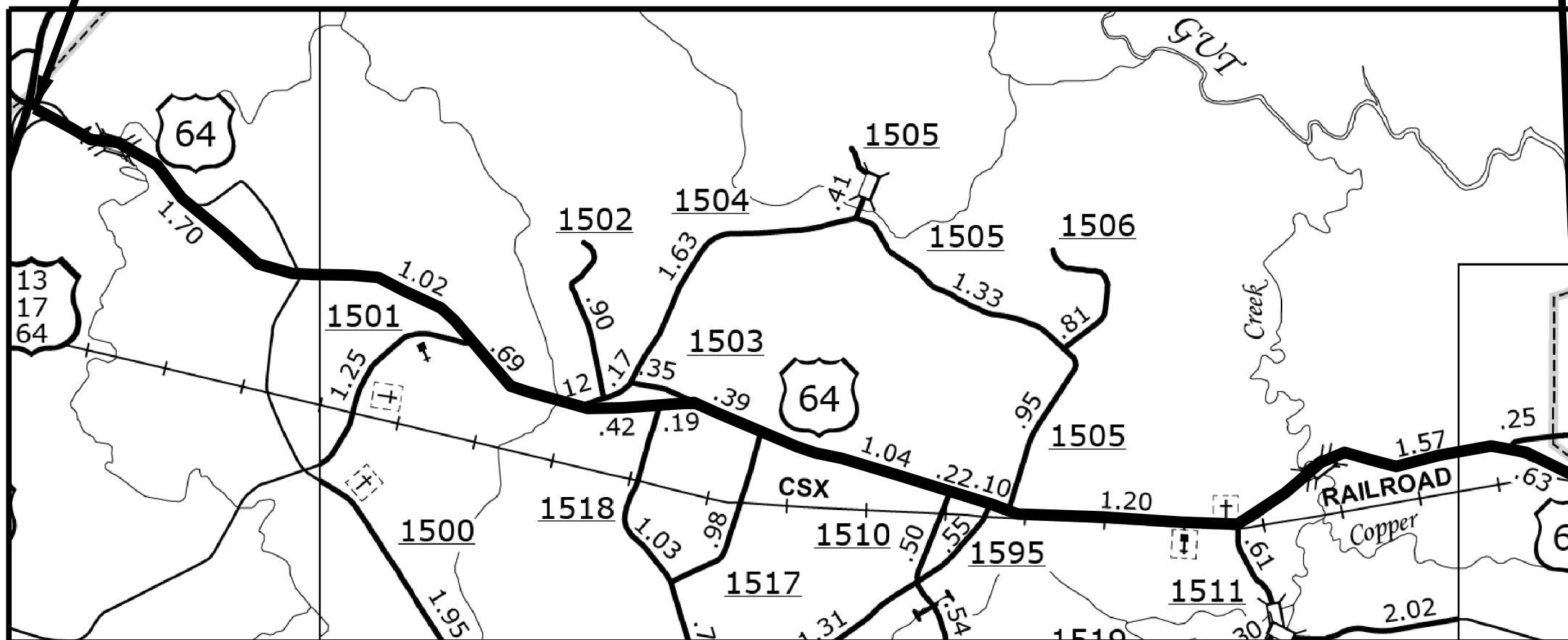
| | | | |
|-----------------------|-----------------------------|-------------|--------------|
| STATE | STATE PROJECT REFERENCE NO. | SHEET NO. | TOTAL SHEETS |
| N.C. | 2017CPT.01.23.10581.1 | 3 | |
| STATE FUND NO. | F.A.FUND NO. | DESCRIPTION | |
| 2017CPT.01.23.10581.1 | | MAP 5 | |
| | | | |

LOCATION: MAP 5 - US 64 WB - FROM BEGIN CURB & GUTTER IN JAMESVILLE TO BRIDGE (OVER SWEETWATER CREEK)

TYPE OF WORK: MILLING, RESURFACING, & LONG LIFE PAVEMENT MARKINGS

END MAP 5

BEGIN MAP 5



NOT TO SCALE

CONTRACT: DA00350 WBS ELEMENT: 2017CPT.01.23.10581.1

PROJECT LENGTH

LENGTH OF MAP 5 = 8.3 MI.

Prepared in the Office of:
DIVISION OF HIGHWAYS
113 Airport Dr., Edenton NC, 27932

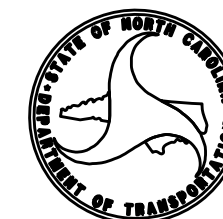
2012 STANDARD SPECIFICATIONS

LETTING DATE:

W.B. HOBBS, P.E.
DIVISION PROJECT MANAGER

C.E. SLACHTA
DIVISION PROPOSALS ENGINEER

DIVISION OF HIGHWAYS
STATE OF NORTH CAROLINA



09/28/15

CONTRACT: DA00350 WBS ELEMENT: 2017CPT.01.23.10581.1

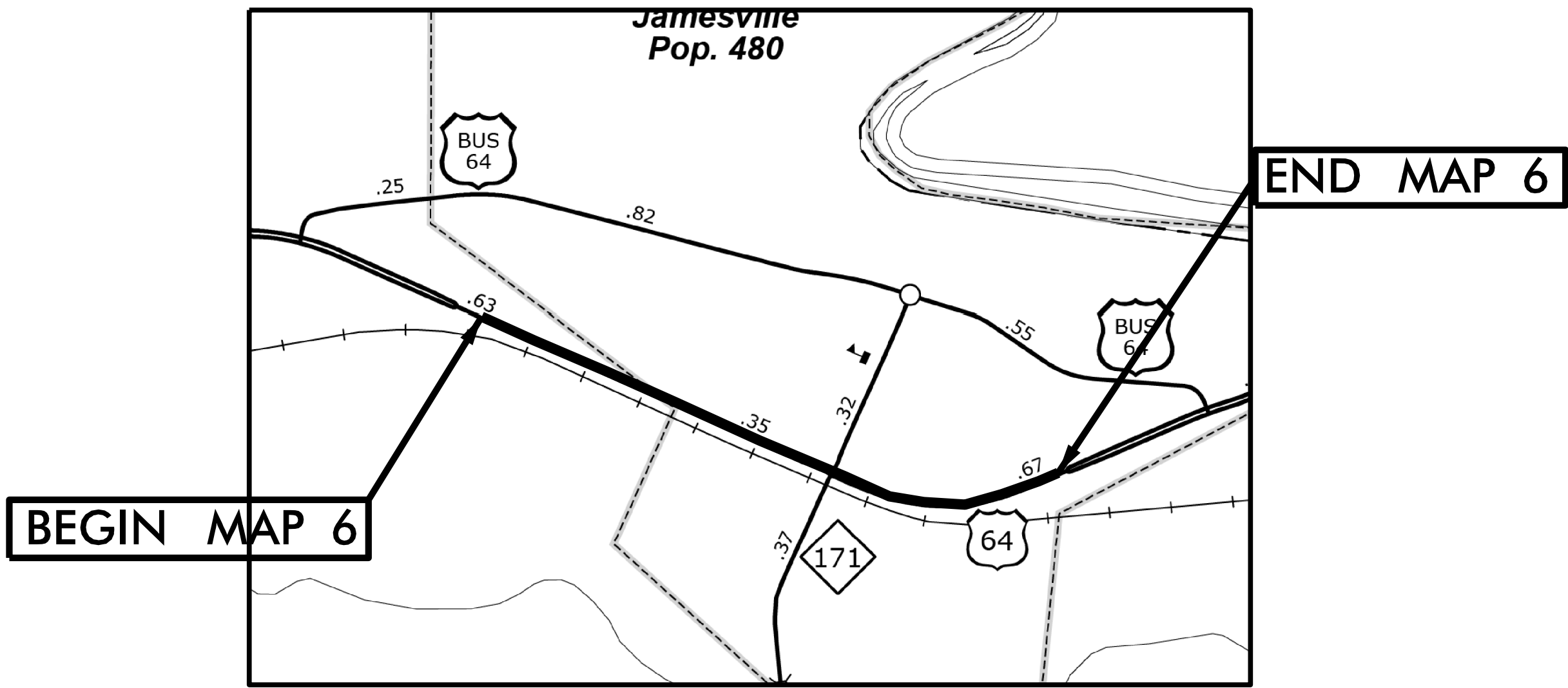
STATE OF NORTH CAROLINA
DIVISION OF HIGHWAYS
MARTIN COUNTY

| | | | |
|-----------------------|-----------------------------|-------------|--------------|
| STATE | STATE PROJECT REFERENCE NO. | SHEET NO. | TOTAL SHEETS |
| N.C. | 2017CPT.01.26.10581.1 | 4 | |
| STATE PROJ. NO. | F.A. PROJ. NO. | DESCRIPTION | |
| 2017CPT.01.23.10581.1 | | MAP 6 | |
| | | | |
| | | | |



LOCATION: MAP 6 - US 64 EB/WB - FROM BEGIN CURB & GUTTER TO END CURB & GUTTER (JAMESVILLE)

TYPE OF WORK: MILLING, RESURFACING, & LONG LIFE PAVEMENT MARKINGS



NOT TO SCALE

CONTRACT: DA00350 WBS ELEMENT: 2017CPT.01.23.10581.1

PROJECT LENGTH

LENGTH OF MAP 6 = 1.07 MI.

Prepared in the Office of:
DIVISION OF HIGHWAYS
113 Airport Dr., Edenton NC, 27932

2012 STANDARD SPECIFICATIONS

LETTING DATE:

W.B. HOBBS, P.E.
DIVISION PROJECT MANAGER

C.E. SLACHTA
DIVISION PROPOSALS ENGINEER

DIVISION OF HIGHWAYS
STATE OF NORTH CAROLINA

09/08/09

CONTRACT: DA00350 WBS ELEMENT: 2017CPT.01.23.10581.1

STATE OF NORTH CAROLINA
DIVISION OF HIGHWAYS

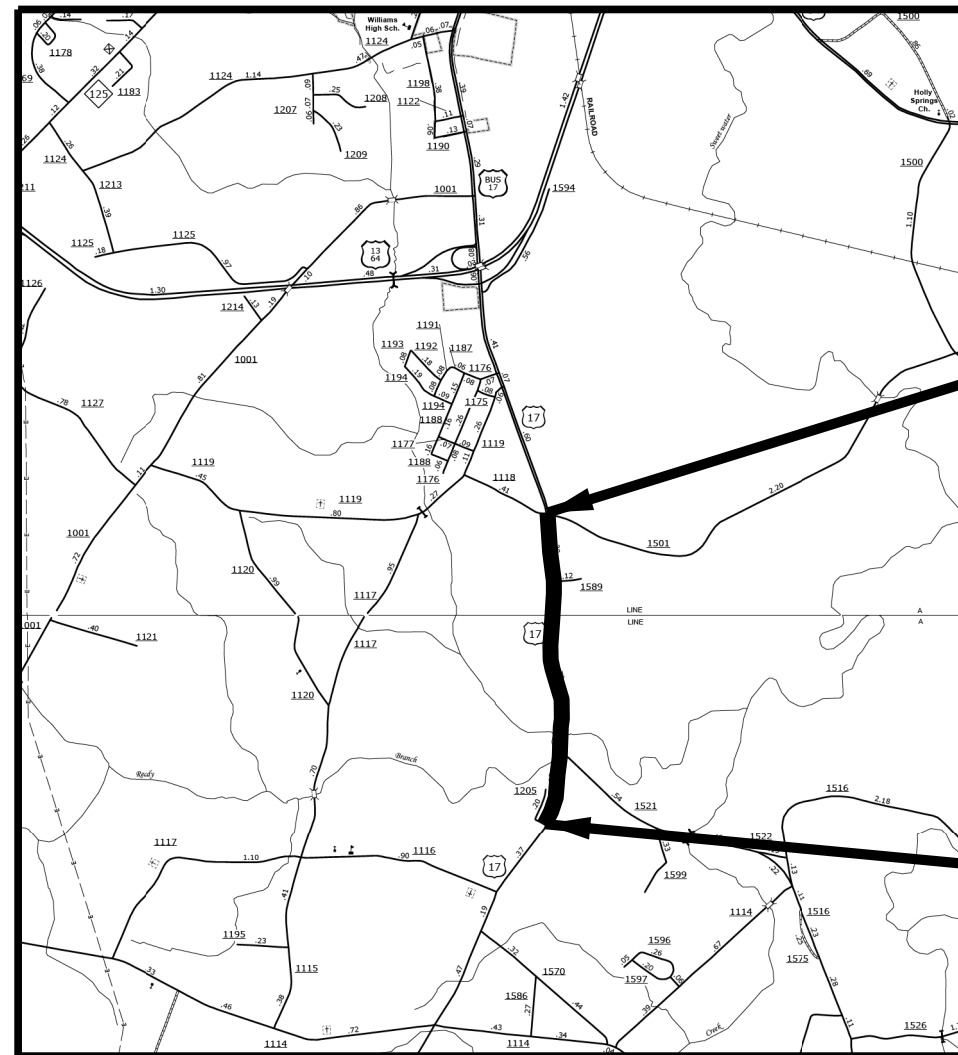
MARTIN COUNTY

| STATE | STATE PROJECT REFERENCE NO. | SHEET NO. | TOTAL SHEETS |
|-----------------------|-----------------------------|-------------|--------------|
| N.C. | 2017CPT.01.26.10581.1 | 5 | |
| STATE PROJ. NO. | F.A. PROJ. NO. | DESCRIPTION | |
| 2017CPT.01.23.10581.1 | | MAP 7 | |
| | | | |
| | | | |



LOCATION: MAP 7 - US 17 NB - FROM END 4 LANE TO SR 1118

TYPE OF WORK: MILLING, RESURFACING, & LONG LIFE PAVEMENT MARKINGS



END MAP 7

BEGIN MAP 7

NOT TO SCALE

PROJECT LENGTH

LENGTH OF MAP 7 = 2.0 MI.

Prepared in the Office of:
DIVISION OF HIGHWAYS

113 Airport Dr., Edenton NC, 27932

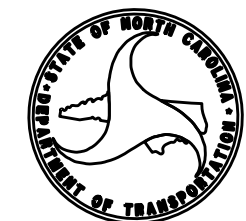
2012 STANDARD SPECIFICATIONS

LETTING DATE:

W.B. HOBBS, P.E.
DIVISION PROJECT MANAGER

C.E. SLACHTA
DIVISION PROPOSALS ENGINEER

DIVISION OF HIGHWAYS
STATE OF NORTH CAROLINA



05/08/55

CONTRACT: DA00350 WBS ELEMENT: 2017CPT.01.23.10581.1

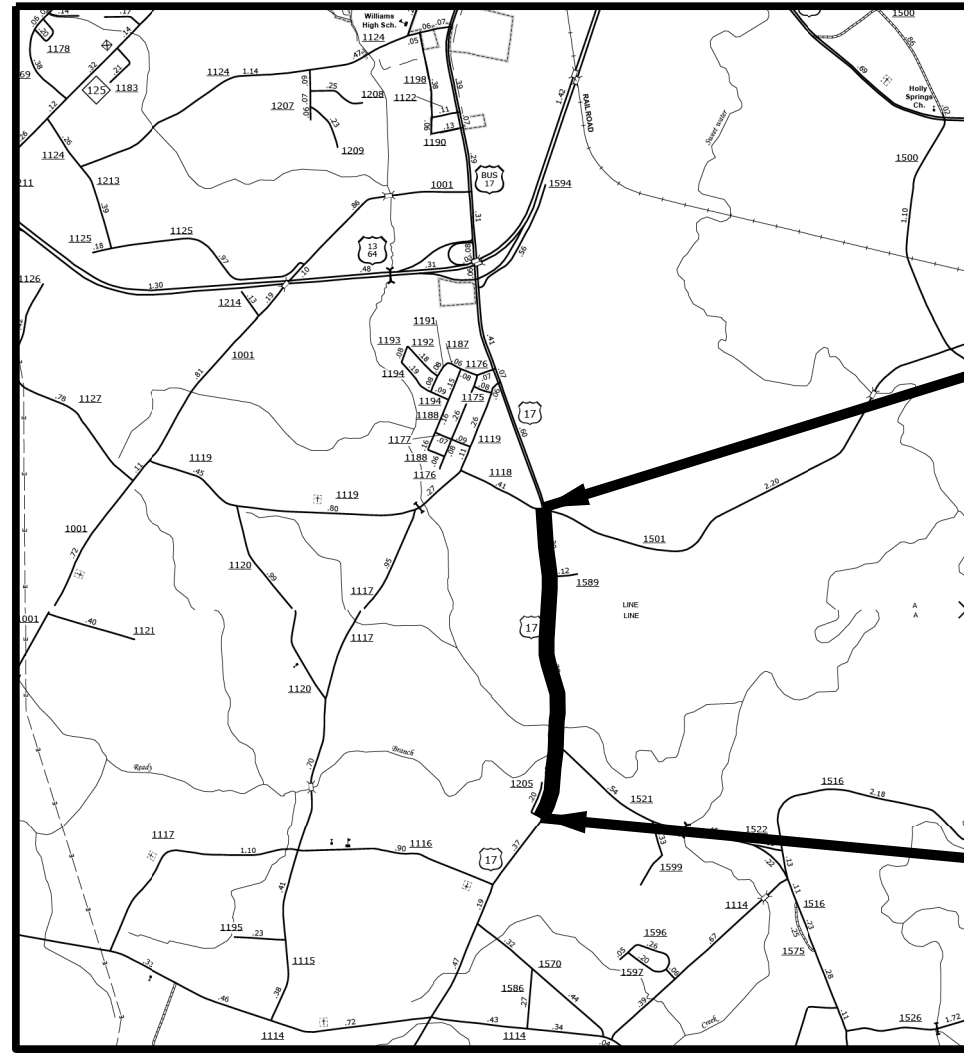
STATE OF NORTH CAROLINA
DIVISION OF HIGHWAYS
MARTIN COUNTY

| | | | |
|-----------------------|-----------------------------|-------------|--------------|
| STATE | STATE PROJECT REFERENCE NO. | SHEET NO. | TOTAL SHEETS |
| N.C. | 2017CPT.01.23.10581.1 | 6 | |
| STATE PROJ. NO. | F.A. PROJ. NO. | DESCRIPTION | |
| 2017CPT.01.23.10581.1 | | MAP 8 | |
| | | | |
| | | | |



LOCATION: MAP 8 - US 17 SB- FROM SR 1118 TO END 4 LANE

TYPE OF WORK: MILLING, RESURFACING, & LONG LIFE PAVEMENT MARKINGS



BEGIN MAP 8

END MAP 8

NOT TO SCALE

PROJECT LENGTH

LENGTH OF MAP 8 = 2.0 MI.

Prepared in the Office of
DIVISION OF HIGHWAYS
113 Airport Dr., Edenton NC, 27932

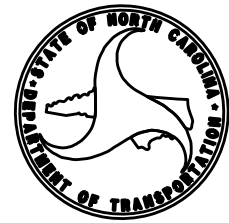
2012 STANDARD SPECIFICATIONS

LETTING DATE:

W.B. HOBBS, P.E.
DIVISION PROJECT MANAGER

C.E. SLACHTA
DIVISION PROPOSALS ENGINEER

DIVISION OF HIGHWAYS
STATE OF NORTH CAROLINA



09/08/2017

CONTRACT: DA00350 WBS ELEMENT: 2017CPT.01.23.10581.1

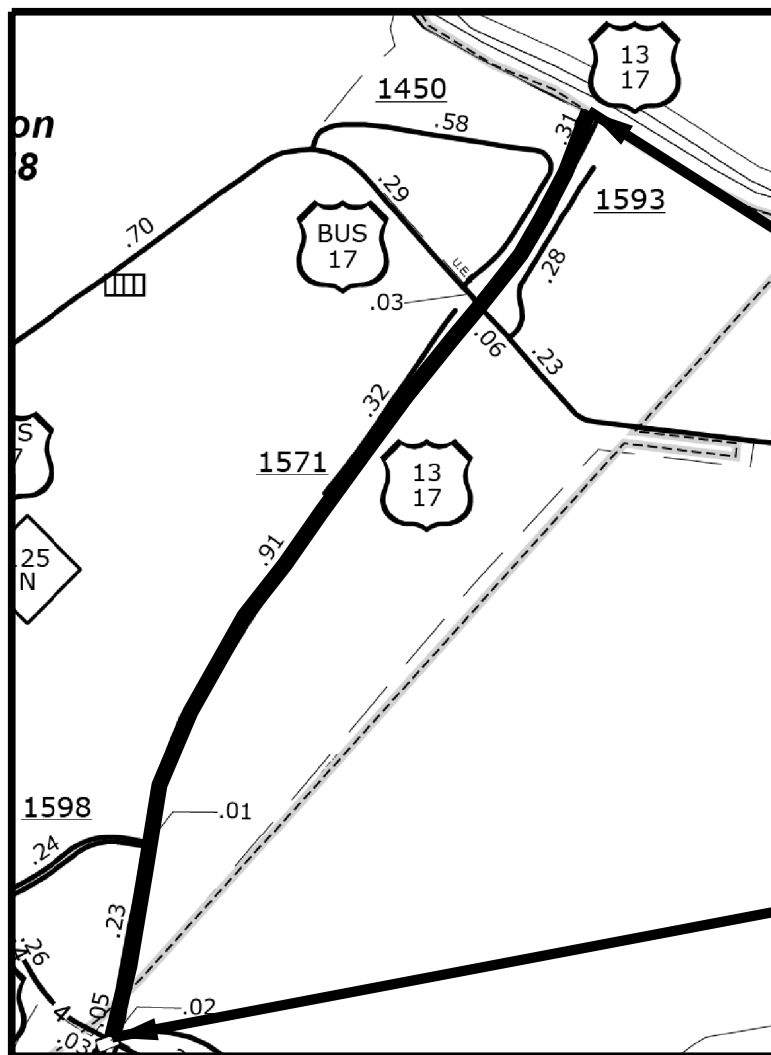
STATE OF NORTH CAROLINA
DIVISION OF HIGHWAYS

MARTIN COUNTY

| | | | |
|-----------------------|-----------------------------|-------------|--------------|
| STATE | STATE PROJECT REFERENCE NO. | SHEET NO. | TOTAL SHEETS |
| N.C. | 2017CPT.01.23.10581.1 | 7 | |
| STATE PROJ. NO. | F.A. PROJ. NO. | DESCRIPTION | |
| 2017CPT.01.23.10521.1 | | MAP 9 | |
| | | | |
| | | | |

LOCATION: MAP 9 - US 13 & US 17 NB - FROM US 64 TO BERTIE COUNTY LINE

TYPE OF WORK: MILLING, RESURFACING, & LONG LIFE PAVEMENT MARKINGS



END MAP 9

BEGIN MAP 9

NOT TO SCALE

PROJECT LENGTH

LENGTH OF MAP 9 = 1.5 MI.

Prepared in the Office of:
DIVISION OF HIGHWAYS
113 Airport Dr., Edenton NC, 27932

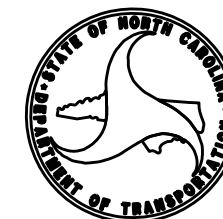
2012 STANDARD SPECIFICATIONS

LETTING DATE:

W.B. HOBBS, P.E.
DIVISION PROJECT MANAGER

C.E. SLACHTA
DIVISION PROPOSALS ENGINEER

DIVISION OF HIGHWAYS
STATE OF NORTH CAROLINA



05/08/15

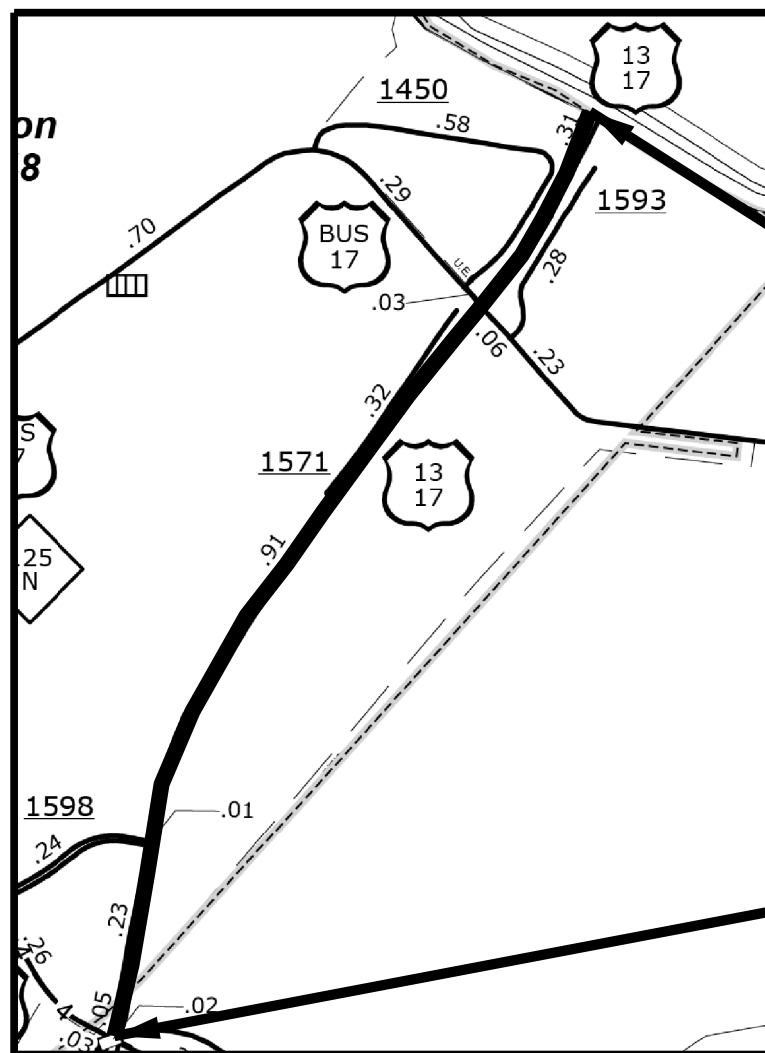
CONTRACT: DA00350 WBS ELEMENT: 2017CPT.01.23.10581.1

STATE OF NORTH CAROLINA
DIVISION OF HIGHWAYS

MARTIN COUNTY

| | | | |
|-----------------------|-----------------------------|-------------|--------------|
| STATE | STATE PROJECT REFERENCE NO. | SHEET NO. | TOTAL SHEETS |
| N.C. | 2017CPT.01.23.10521.1 | 8 | |
| STATE PROJ. NO. | F.A. PROJ. NO. | DESCRIPTION | |
| 2017CPT.01.23.10521.1 | | MAP 10 | |
| | | | |
| | | | |

LOCATION: MAP 10 - US 13 & US 17 SB - FROM BERTIE COUNTY LINE TO US 64
TYPE OF WORK: MILLING, RESURFACING, & LONG LIFE PAVEMENT MARKINGS



BEGIN MAP 10

END MAP 10

NOT TO SCALE

PROJECT LENGTH

LENGTH OF MAP 10 = 1.5 MI.

Prepared in the Office of
DIVISION OF HIGHWAYS
113 Airport Dr., Edenton NC, 27932

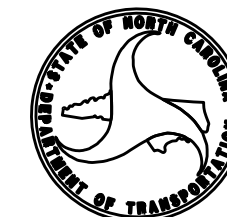
2012 STANDARD SPECIFICATIONS

LETTING DATE:

W.B. HOBBS, P.E.
DIVISION PROJECT MANAGER

C.E. SLACHTA
DIVISION PROPOSALS ENGINEER

DIVISION OF HIGHWAYS
STATE OF NORTH CAROLINA



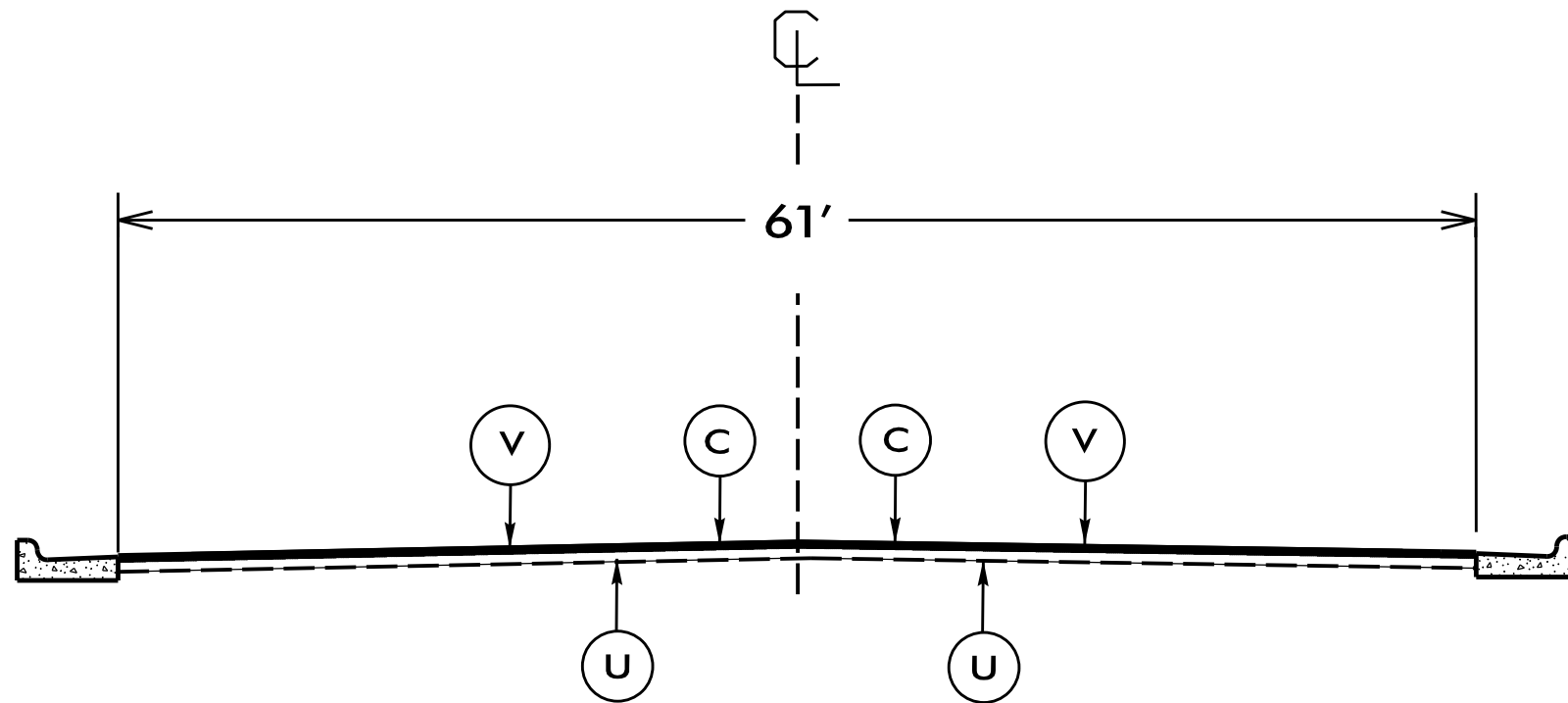
PAVEMENT SCHEDULE

| | |
|---|--|
| C | PROP. APPROX. 1.5" ASPHALT CONCRETE SURFACE COURSE, TYPE S9.5B, AT AN AVERAGE RATE OF 168 LBS. PER SQ. YD. |
| V | MILLING BITUMINOUS PAVEMENT. 1.5" IN DEPTH. |
| U | EXISTING PAVEMENT. |

NOTES:

*ALL PAVED S.R. ROADS TO BE RESURFACED TO THE ENDS OF THE RADII, OR AS DIRECTED BY THE ENGINEER

*CONTRACTOR SHALL MILL 1.5" BELOW EXISTING EDGE OF CONC. CURB & GUTTER.



TYPICAL SECTION NO. 4

USE WITH MAP 6

\$\$\$\$\$
 CON
 12
 11
 10
 9
 8
 7
 6
 5
 4
 3
 2
 1
 0
 1
 2
 3
 4
 5
 6
 7
 8
 9
 10
 11
 12
 CON
 \$\$\$\$\$

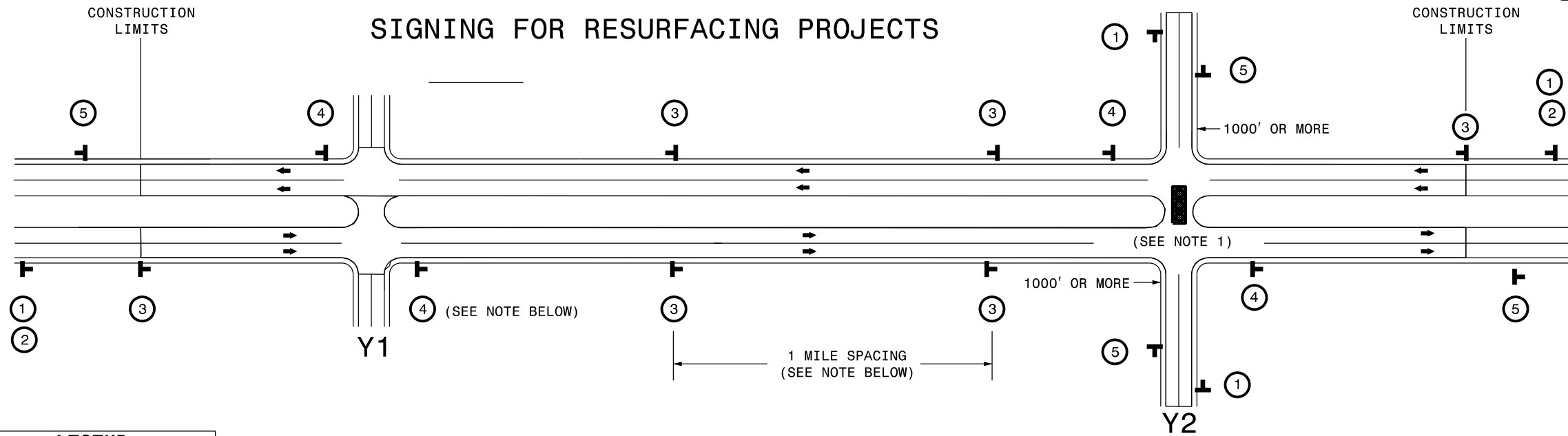
| | |
|-----------------------|-----------|
| PROJECT NO. | SHEET NO. |
| 2017CPT.01.23.10581.1 | 13 |

SUMMARY OF QUANTITIES

| PROJECT NO | COUNTY | MAP NO | ROUTE | DESCRIPTION | TYP | LANES | LANE TYPE | FINAL SURFACE TESTING REQUIRED | WARM MIX ASPHALT REQUIRED | LENGTH MI | WIDTH FT | MOBILIZATION LS | 1 1/2" MILLING SY | SURFACE COURSE, S9.5B TONS | ASPHALT BINDER FOR PLANT MIX TONS | ADJ. OF MANHOLES EA | ADJ. OF METER OR VALVE BOX EA | WORK ZONE ADVANCE / GENERAL WARNING SIGNS SF | TEMPORARY TRAFFIC CONTROL LS | UNPAVED TRENCHING (*****)^ LF | JUNCTION BOX (STANDARD SIZE) EA | INDUCTIVE LOOP LF | LEAD-IN CABLE LF | |
|-----------------------|--------|--------|---------------|---|-----|-------|-----------|--------------------------------|---------------------------|--------------|----------|-----------------|-------------------|----------------------------|-----------------------------------|---------------------|-------------------------------|--|------------------------------|-------------------------------|---------------------------------|-------------------|------------------|--|
| 2017CPT.01.23.10581.1 | Martin | 1 | US 64 | US 64 EB/WB FROM US 13 TO BRIDGE | 1 | 5 | MU | NO | NO | 0.47 | 60 | 1 | 17,400 | 1,462 | 88 | | | 125 | 1 | | | | | |
| 2017CPT.01.23.10581.1 | Martin | 2 | US 64 | US 64 WB RAMP FROM US 64 TO BRIDGE | 2 | 1 | MD | NO | NO | 0.27 | 25 | * | 4,000 | 351 | 21 | | | | * | | | | | |
| 2017CPT.01.23.10581.1 | Martin | 3 | US 64 | US 64 EB RAMP FROM US 13/17 TO US 64 | 2 | 1 | MD | NO | NO | 0.32 | 23 | * | 4,500 | 383 | 23 | | | | * | | | | | |
| 2017CPT.01.23.10581.1 | Martin | 4 | US 64 | US 64 EB FROM BRIDGE TO BEGIN CURB AND GUTTER | 3 | 2 | MD | NO | NO | 8.3 | 32 | * | 163,650 | 13,797 | 828 | | | 1,000 | * | | | | | |
| 2017CPT.01.23.10581.1 | Martin | 5 | US 64 | US 64 WB FROM BEGIN CURB AND GUTTER TO BRIDGE | 3 | 2 | MD | NO | NO | 8.3 | 32 | * | 163,650 | 13,797 | 828 | | | 1,000 | * | | | | | |
| 2017CPT.01.23.10581.1 | Martin | 6 | US 64 | US64 EB/WB GURB AND GUTTER IN JAMESVILLE | 4 | 5 | MU | NO | NO | 1.07 | 61 | * | 40,200 | 3,384 | 203 | | | 200 | * | 200.00 | 3 | 1,500 | 200 | |
| 2017CPT.01.23.10581.1 | Martin | 7 | US 17 | US 17 NB FROM END 4 LANE TO SR 1118 | 3 | 2 | MD | NO | NO | 2 | 32 | * | 39,500 | 3,325 | 199 | | | 250 | * | | | | | |
| 2017CPT.01.23.10581.1 | Martin | 8 | US 17 | US 17 SB FROM SR 1118 TO END 4 LANE | 3 | 2 | MD | NO | NO | 2 | 32 | * | 39,500 | 3,325 | 199 | | | 250 | * | | | | | |
| 2017CPT.01.23.10581.1 | Martin | 9 | US 13 / US 17 | US 13 / US 17 NB FROM US 64 TO BERTIE COUNTY LINE | 1,3 | 2 | MD | NO | NO | 1.5 | 32 | * | 30,000 | 2,493 | 150 | 8 | 4 | 250 | * | 200.00 | 3 | 2,000 | 200 | |
| 2017CPT.01.23.10581.1 | Martin | 10 | US 13 / US 17 | US 13 / US 17 SB FROM BERTIE COUNTY LINE TO US 64 | 1,3 | 2 | MD | NO | NO | 1.5 | 32 | * | 30,000 | 2,493 | 150 | 8 | 4 | 250 | * | 200.00 | 3 | 2,000 | 200 | |
| GRAND TOTAL | | | | | | | | | | 25.73 | | 1 | 532,400 | 44,810 | 2,689 | 16 | 8 | 3,325 | 1 | 600 | 9 | 5,500 | 600 | |

THERMOPLASTIC AND PAINT QUANTITIES

| PROJECT NO | COUNTY | MAP NO | ROUTE | DESCRIPTION | TYP | LANES | LANE TYPE | LENGTH | WIDTH | 4" X 90 M WHITE THERMO LF | 4" X 120 M YELLOW THERMO LF | 8" X 90 M WHITE THERMO LF | 12" X 120 M YELLOW THERMO LF | 24" X 120 M WHITE THERMO LF | THERMO LT ARROW 90 M EA | THERMO STR ARROW 90 M EA | THERMO RT ARROW 90 M EA | THERMO STR & RT ARROW 90 M EA | 4" WHITE PAINT LF | 4" YELLOW PAINT LF | 24" WHITE PAINT LF | SNOW PLOWABLE MARKERS EA |
|-----------------------|--------|--------|---------------|---|-----|-------|-----------|--------------|-------|---------------------------|-----------------------------|---------------------------|------------------------------|-----------------------------|-------------------------|--------------------------|-------------------------|-------------------------------|-------------------|--------------------|--------------------|--------------------------|
| 2017CPT.01.23.10581.1 | Martin | 1 | US 64 | US 64 EB/WB FROM US 13 TO BRIDGE | 1 | 5 | MU | 0.47 | 60 | 8,000 | 6,500 | 900 | 500 | 40 | 5 | 2 | 1 | 2 | 7,500 | 6,000 | | 175 |
| 2017CPT.01.23.10581.1 | Martin | 2 | US 64 | US 64 WB RAMP FROM US 64 TO BRIDGE | 2 | 1 | MD | 0.27 | 25 | 1,500 | 1,500 | | | | | | | | 1,500 | 1,500 | | |
| 2017CPT.01.23.10581.1 | Martin | 3 | US 64 | US 64 EB RAMP FROM US 13/17 TO US 64 | 2 | 1 | MD | 0.32 | 23 | 1,775 | 1,775 | | | | | | | | 1,775 | 1,775 | | |
| 2017CPT.01.23.10581.1 | Martin | 4 | US 64 | US 64 EB FROM BRIDGE TO BEGIN CURB AND GUTTER | 3 | 2 | MD | 8.3 | 32 | 87,000 | 46,000 | | | | 51 | 88 | 1 | 12 | 87,000 | 46,000 | | 900 |
| 2017CPT.01.23.10581.1 | Martin | 5 | US 64 | US 64 WB FROM BEGIN CURB AND GUTTER TO BRIDGE | 3 | 2 | MD | 8.3 | 32 | 87,000 | 46,000 | | | | 51 | 90 | 2 | 10 | 87,000 | 46,000 | | 900 |
| 2017CPT.01.23.10581.1 | Martin | 6 | US 64 | US64 EB/WB GURB AND GUTTER IN JAMESVILLE | 4 | 5 | MU | 1.07 | 61 | 6,000 | 15,000 | | 325 | 18 | 4 | 16 | 4 | 4 | 6,000 | 15,000 | 325 | 300 |
| 2017CPT.01.23.10581.1 | Martin | 7 | US 17 | US 17 NB FROM END 4 LANE TO SR 1118 | 3 | 2 | MD | 2 | 32 | 11,000 | 11,000 | | | | 4 | | 2 | | 11,000 | 11,000 | | 200 |
| 2017CPT.01.23.10581.1 | Martin | 8 | US 17 | US 17 SB FROM SR 1118 TO END 4 LANE | 3 | 2 | MD | 2 | 32 | 11,000 | 11,000 | | | | 3 | | 4 | | 11,000 | 11,000 | | 200 |
| 2017CPT.01.23.10581.1 | Martin | 9 | US 13 / US 17 | US 13 / US 17 NB FROM US 64 TO BERTIE COUNTY LINE | 1,3 | 2 | MD | 1.5 | 32 | 8,300 | 8,000 | | | 250 | 11 | 12 | 5 | 4 | 8,300 | 8,000 | | 175 |
| 2017CPT.01.23.10581.1 | Martin | 10 | US 13 / US 17 | US 13 / US 17 SB FROM BERTIE COUNTY LINE TO US 64 | 1,3 | 2 | MD | 1.5 | 32 | 8,300 | 8,000 | | | 350 | 9 | 14 | 4 | 4 | 8,300 | 8,000 | | 175 |
| GRAND TOTAL | | | | | | | | 25.73 | | 229,875 | 154,775 | 900 | 500 | 965 | 152 | 210 | 35 | 36 | 229,375 | 154,275 | 325 | 3,025 |



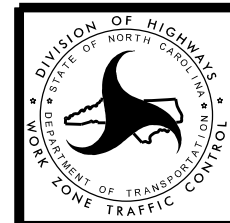
| LEGEND | |
|--------|---------------------------|
| | STATIONARY SIGN |
| | DIRECTION OF TRAFFIC FLOW |

MAINLINE (-L-) SIGNING

-Y- LINE SIGNING

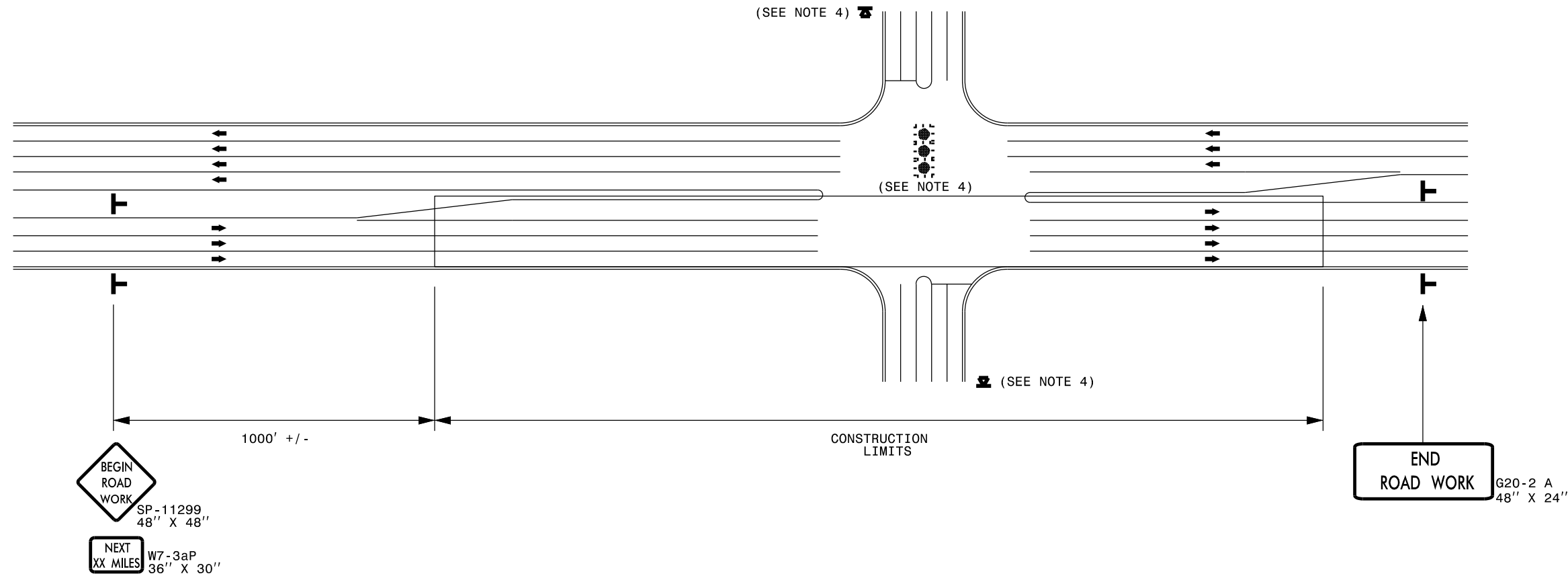
| SIGNING NOTES AND PLACEMENT PER DIRECTION | MAINLINE (-L-) SIGNING | | -Y- LINE SIGNING | |
|---|------------------------|--|---|--|
| | ① | | PLACE 1000' PRIOR TO BEGINNING OF CONSTRUCTION LIMITS. ONLY USED ON -Y- LINES IF RESURFACING LIMITS EXTEND 1000' ALONG -Y- LINE. | <p>NO REQUIRED STATIONARY SIGNING FOR THE FOLLOWING -Y- LINE CONDITIONS:</p> <ol style="list-style-type: none"> 1) LESS THAN 1000' OF RESURFACING ALONG -Y- LINE 2) SUBDIVISION ROADS 3) DEAD END ROADS <p>WHEN PAVING/CONSTRUCTION ACTIVITIES PROCEED ACROSS AN UNSIGNED -Y- LINE, ADVANCE WARNING PORTABLE SIGNS SHALL BE USED ALONG THE -Y- LINE AS SHOWN BELOW. REMOVE UPON COMPLETION OF WORK.</p> <div style="display: flex; justify-content: space-around;"> <div style="text-align: center;"> <small>W20-1 48" X 48"</small> </div> <div style="text-align: center;"> <small>W20-7 A 48" X 48"</small> </div> </div> <p>PLACED 500' IN ADVANCE OF FLAGGER. PLACED 250' IN ADVANCE OF FLAGGER.</p> |
| | ② | | #2 SIGN ONLY USED WHEN RESURFACING LIMITS ARE 2 OR MORE MILES IN LENGTH. ROUND UP TO NEXT WHOLE NUMBER. (NO FRACTIONAL OR DECIMAL NUMBERS) | |
| | ③ | | PLACE INITIALLY AT THE CONSTRUCTION LIMITS AND SPACED 1 MILE APART THEREAFTER. IF NO -Y- LINES EXIST, PLACE 2ND SET 1/2 MILE FROM THE CONSTRUCTION LIMITS AND THEN SPACE 1 MILE THEREAFTER. | |
| | ④ | | THESE ARE FOR -Y- LINES THAT ARE "THROUGH" ROADWAYS. DEAD END AND SUBDIVISION ROADS ARE NOT "THROUGH" ROADWAYS. INSTALL 500' +/- FROM EACH -Y- LINE APPROACH AS SHOWN ABOVE. FOR MULTIPLE -Y- LINES THAT ARE SEPARATED BY 0.25 MILES OR LESS, TREAT AS A SINGLE UNIT AND INSTALL WITHIN 500' OF EACH APPROACH. A MAXIMUM OF 2 SIGN SETS PER MILE. DO NOT INSTALL WHEN -Y- LINES ARE WITHIN 0.5 MILES FROM "END ROAD WORK" SIGN. | |
| ⑤ | | PLACE 500' FOLLOWING THE END OF CONSTRUCTION LIMITS. | | |
| | | | <p>NOTES:</p> <ol style="list-style-type: none"> 1) MAY USE LAW ENFORCEMENT TO CONTROL TRAFFIC AT SIGNALIZED INTERSECTIONS AS DIRECTED BY THE ENGINEER. PROVIDE PORTABLE "ROAD WORK AHEAD" (W20-1) SIGNS 500' IN ADVANCE ALONG BOTH APPROACHES FROM THE SIDE STREETS WHEN PAVING PROCEEDS THROUGH THE INTERSECTION. | |

\$\$\$\$\$SYTIME\$\$\$\$\$
\$\$\$\$\$DGN\$\$\$\$\$
\$\$\$\$\$USERNAME\$\$\$\$\$



RESURFACING
ADVANCE WARNING SIGNS
FOR RURAL AND SUBURBAN
MULTI-LANE ROADWAYS
W/ SHOULDER SECTIONS

URBAN / SUBURBAN WORKZONES



NOTES:

- 1) 48" x 48" SIZED SIGNS (SP- 11299) MAY BE REDUCED TO 36" X 36" ON ROADWAYS WITH SPEED LIMITS OF 40 MPH OR LESS.
- 2) MOUNT SIGNS THAT ARE LARGER THAN 10 SQUARE FEET IN AREA ON TWO OR MORE WOOD OR U-CHANNEL SUPPORTS. PERFORATED SQUARE TUBING SUPPORT SYSTEMS MAY SUPPORT LARGER AREAS ON A SINGLE SUPPORT. FOLLOW MANUFACTURER'S RECOMMENDATIONS. THESE SYSTEMS SHALL BE NCHRP 350 COMPLIANT AND NCDOT APPROVED.
- 3) ADVANCE WARNING SIGNS NOT REQUIRED ON NON-SIGNALIZED SIDE STREETS.
- 4) MAY USE LAW ENFORCEMENT TO CONTROL TRAFFIC AT SIGNALIZED INTERSECTIONS AS DIRECTED BY THE ENGINEER. PROVIDE PORTABLE "ROAD WORK AHEAD" (W20-1) SIGNS 500' IN ADVANCE ALONG BOTH APPROACHES FROM THE SIDE STREETS WHEN PAVING PROCEEDS THROUGH THE INTERSECTION.
- 5) LATERAL CLEARANCE AT ALL SIGN LOCATIONS SHALL BE 2' AS MEASURED FROM THE EDGE OF PAVEMENT OR THE FACE OF THE CURB. WHEN UNABLE TO OBTAIN THE LATERAL CLEARANCE WITHIN THE MEDIAN AREA USE SHOULDER MOUNTS ONLY.
- 6) SIGN MOUNT LOCATIONS SHALL NOT BLOCK SIDEWALKS OR DRIVEWAYS.
- 7) IF STATIONARY GENERAL WARNING SIGNS ARE USED, THEY WILL BE PAID FOR PER SECTION 104 OF THE NCDOT STANDARD SPECIFICATIONS AS EXTRA WORK.
- 8) IF MILLED AREAS ARE NOT PAVED BACK BY THE END OF THE WORK DAY, PORTABLE SIGNS SHALL BE USED TO WARN DRIVERS OF THE PRESENT CONDITIONS. THESE ARE TO INCLUDE, BUT NOT LIMITED TO "ROUGH ROAD" W8-8, "UNEVEN LANES" W8-11, "GROOVED PAVEMENT" W8-15 w/MOTORCYCLE PLAQUE MOUNTED BELOW. THESE ARE TO BE DOUBLE INDICATED ON MULTI-LANE ROADWAYS WITH SPEED LIMITS 45 MPH AND GREATER WHERE LATERAL CLEARANCE CAN BE OBTAINED WITHIN THE MEDIAN AREAS. THESE PORTABLE SIGNS ARE INCIDENTAL TO THE OTHER ITEMS OF WORK INCLUDED IN THE TEMPORARY TRAFFIC CONTROL (LUMP SUM) PAY ITEM.

LEGEND

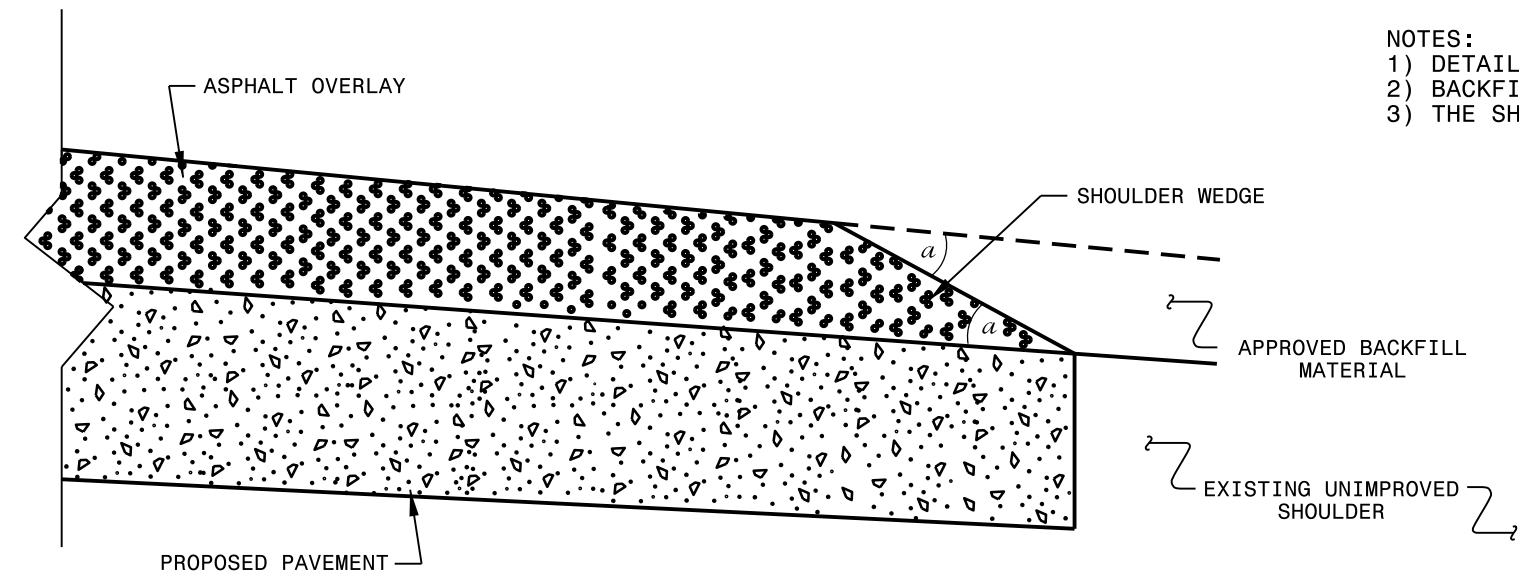
- STATIONARY SIGN
- DIRECTION OF TRAFFIC FLOW



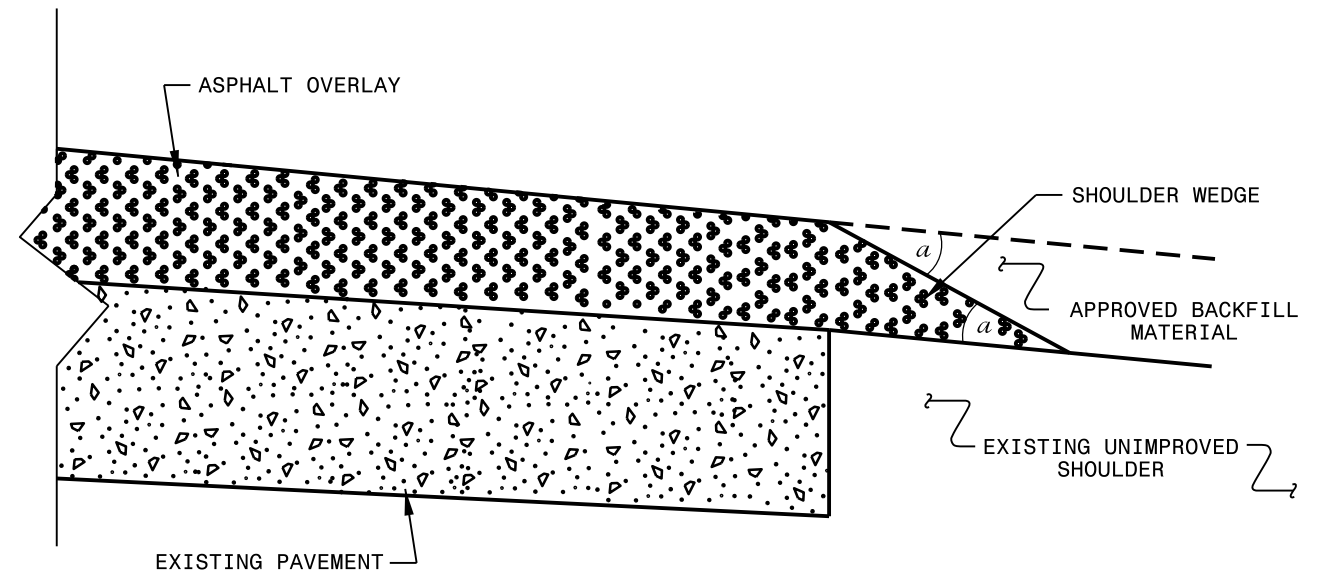
**RESURFACING ADVANCE
WARNING SIGNS FOR
URBAN / SUBURBAN
FACILITIES**

\$\$\$SYTIME\$\$\$
 \$\$\$DCN\$\$\$
 \$\$\$SERNAME\$\$\$
 \$\$\$\$\$\$

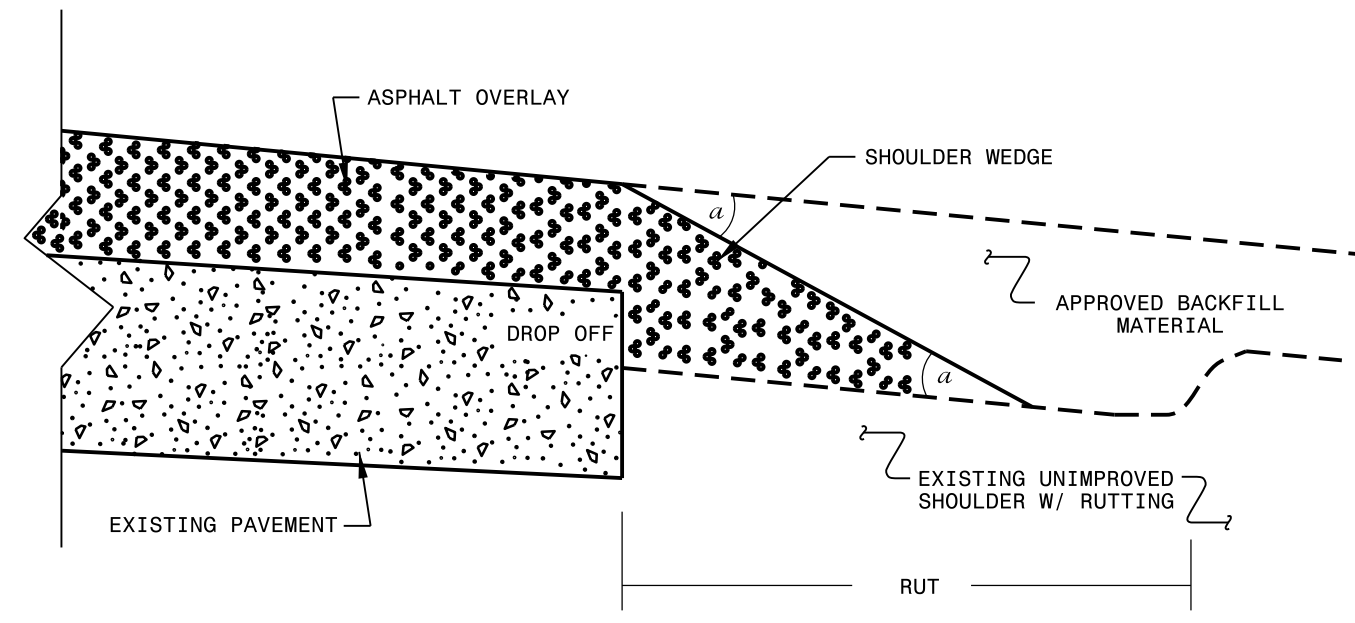
- NOTES:
- 1) DETAIL DOES NOT APPLY TO OGAFc AND ULTRA-THIN BONDED WEARING COURSE.
 - 2) BACKFILL SHOULDER WITH APPROVED MATERIAL.
 - 3) THE SHOULDER WEDGE DEVICE MAY BE DISENGAGED AT PAVED DRIVEWAYS AND SIDE STREETS.



SHOULDER WEDGE DETAIL
 (Resurfacing Projects w/ Widening or
 with Existing Paved Shoulder having no dropoffs)



SHOULDER WEDGE DETAIL
 (Resurfacing Projects w/ NO Widening)



SHOULDER WEDGE DETAIL
 (Resurfacing Adjacent to
 Rutted Shoulder)

- SHOULDER WEDGE ANGLE = 30°

CONTRACT STANDARDS
 AND DEVELOPMENT UNIT
 Office 919-707-6950 FAX 919-250-4119

**SHOULDER WEDGE
 DETAILS**

ORIGINAL BY: T.SPELL DATE: 7-19-11
 MODIFIED BY: DATE: 10/16/12
 CHECKED BY: DATE:
 FILE SPEC.: susr/details/stand/shoulderwedgedetail.dgn

SYSTEMS DESIGN
 USER NAME